

*Nunavik Guidebook
Mineral Exploration, Mining
Development and Nunavik Region*



LP^{ca}ab
Société Makivik
Makivik Corporation

NUNAVIK GUIDEBOOK

MINERAL EXPLORATION, MINING DEVELOPMENT AND THE NUNAVIK REGION

SPRING 2011

Authors:

Jean-Marc Séguin, M.Sc. P.Geo, Technical Director, NMEF
Me Mylène Larivière, Makivik Corporation

Presented by:

Makivik Corporation
Nunavik Mineral Exploration Fund



Mining/Mineral exploration project declaration form

Company's name: _____

Address/contacts: _____

Project's name: _____

Location of the project (Coordinates/map): _____

Nature and scope of the activities:

Starting date of activities (approx.): _____

Ending date of activities (approx.): _____

Number of people involved in the fieldwork project: _____

Infrastructures required : _____

Establishment of camp (temporary/permanent) _____

Description and location:

PREAMBLE:

The territory north of the 55th parallel in Quebec referred to as the "Nunavik region" is a vast territory with significant mineral potential of great interest to mineral exploration companies. The region's inhabitants, descendants of the Thule Inuit, have inhabited and used their region, the land and the environment, which sustains their traditional activities and way of life since time immemorial. Nunavik Inuit also have specific rights in and to this region as defined in the first modern treaty in Canada, the James Bay and Northern Quebec Agreement (JBNQA)¹.

For over a century now, mineral exploration projects have been carried out throughout the Nunavik region: from grass-roots exploration campaigns with tents and portages to the creation of fully operational mines, proving over the years the mineral potential of the Nunavik region. Unfortunately, the dubious practices of a few companies have led to a legacy of abandoned mining equipment and have created difficult relationships with the communities. The region, however, is receptive to mineral exploration and mining development with companies who practice good business principles and conduct exploration activities which take into account the uniqueness of the land and environment of the Nunavik region.

This Guidebook has been written to ensure that companies operating within the Nunavik region are aware of their obligations (for example, the type of permits and authorizations required as well as how to apply for these documents, etc.). It contains brief summaries of the applicable legal regimes, laws, regulations and the relevant provisions of the JBNQA. This document also contains information which will hopefully foster a positive working relationship between the mining industry and the residents of the Nunavik region. Finally, this Guidebook provides a list of organizations which provide assistance in the development of mining projects, the recruitment of local manpower, the requisite resource contacts in the event of an environmental incident, personal injury or breach of public security.



¹ This Guidebook refers to activities carried inland, as opposed to carried out in the Nunavik Marine Region, for which we refer you to the Nunavik Inuit Land Claims Agreement (NILCA) and responsible management institutions: Nunavik Marine Region Planning Commission (NMRPC), Nunavik Marine Region Impact Review Board (NMRIRB), and Nunavik Marine Region Wildlife Board (NMRWB).

The KRG comprises a Public Security Department which includes two sections: **the Kativik Regional Police Force** and the **Civil Security Section**. The police stations located in each Nunavik community are the first responders in all emergency situations. Contact numbers are listed below:

<i>Community</i>	<i>Police stations emergency numbers</i>
Akulivik	Tel.: 819.496.9111
Aupaluk	Tel.: 819.491.9111
Inukjuak	Tel.: 819.254.9111
Ivujivik	Tel.: 819.922.9111
Kangiqsualujuaq	Tel.: 819.337.9111
Kangiqsujuaq	Tel.: 819.338.9111
Kangirsuk	Tel.: 819.935.9111

<i>Community</i>	<i>Police stations emergency numbers</i>
Kuujuaq	Tel.: 819.964.9111
Kuujuaaraapik	Tel.: 819.254.9111
Puvimituq	Tel.: 819.988.9111
Quaqtaq	Tel.: 819.492.9111
Salluit	Tel.: 819.255.9111
Tasiujaq	Tel.: 819.633.9111
Umiujaq	Tel.: 819.331.9111

The KRG Public Security department also coordinates firefighting services in each Nunavik community. Contact numbers are listed below:

<i>Community</i>	<i>Fire Halls emergency numbers</i>
Akulivik	Tel.: 819.496.9000
Aupaluk	Tel.: 819.491.9000
Inukjuak	Tel.: 819.254.9000
Ivujivik	Tel.: 819.922.9000
Kangiqsualujuaq	Tel.: 819.337.9000
Kangiqsujuaq	Tel.: 819.338.9000
Kangirsuk	Tel.: 819.935.9000

<i>Community</i>	<i>Fire Halls emergency numbers</i>
Kuujuaq	Tel.: 819.964.9000
Kuujuaaraapik	Tel.: 819.254.9000
Puvimituq	Tel.: 819.988.9000
Quaqtaq	Tel.: 819.492.9000
Salluit	Tel.: 819.255.9000
Tasiujaq	Tel.: 819.633.9000
Umiujaq	Tel.: 819.331.9000

SECTION-8 HEALTH SERVICES AND PUBLIC SECURITY

The Nunavik region has two health institutions: the Ungava Tulattavik Health Centre in Kuujjuaq (serving the Ungava coast) and the Inuulitsivik Health Centre in Puvirnituq (serving the Hudson coast).

Each Nunavik community has a local community service center which offers front-line public health services:

Inuulitsivik Health Center

General delivery
Puvirnituq, Québec, J0M 1C0
Tel. (819) 988-2957
Fax (819) 988-2796

www.inuulitsivik.ca

Tulattavik Health Center

P.O. Box 149
Kuujjuaq, Quebec, J0M 1C0
Tel. (819) 964-2905
Fax (819) 964-6353

Community	Services Centers (CLSC) emergency numbers
Akulivik	Tel.: 819.496.9090
Aupaluk	Tel.: 819.491.9090
Inukjuak	Tel.: 819.254.9090
Ivujivik	Tel.: 819.922.9090
Kangiqaualujjuaq	Tel.: 819.337.9090
Kangiqaqujuaq	Tel.: 819.338.9090
Kangirsuk	Tel.: 819.935.9090

Community	Services Centers (CLSC) emergency numbers
Kuujjuaq	Tel.: 819.964.9090
Kuujjuaraapik	Tel.: 819.254.9090
Puvirnituq	Tel.: 819.988.9090
Quaqtaq	Tel.: 819.492.9090
Salluit	Tel.: 819.255.9090
Tasiujaq	Tel.: 819.633.9090
Umiujaq	Tel.: 819.331.9090



TABLE OF CONTENTS

SECTION 1- GLOSSARY OF TERMS.....	7
SECTION 2- NUNAVIK MAP	10
SECTION 3 – CONTEXTS	11
3.1 - Inuit Category I, II and III lands	11
3.2 – Mining and Inuit engagement.....	11
3.2.1 Communication Networking, and Sustainable relationship between the Nunavik region and the mining sector.....	12
3.2.3 Case studies and best practises.....	13
SECTION 4 - PROVISIONS ON MINING ACTIVITIES.....	13
4.1 Exploration/Exploitation/Termination Framework.....	14
4.1.1 Pre-Development	14
4.1.1.1 Category I land	14
4.1.1.2 Category II land	15
4.1.1.3 Category III land	16
4.1.2 Development	17
4.1.2.1 Category I land	17
4.1.2.2 Category II lands	18
4.1.2.3 Category III lands	18
4.1.3 Post-Development	19
4.2 Other Provisions and Obligations.....	19
4.2.1 Respecting Fishing, Hunting and Trapping rights.....	19
4.2.2 Continuous obligations	20
4.3 - Contact information.....	21
SECTION 5 – REGIONAL EMPLOYMENT	24
SECTION-6 NUNAVIK BUSINESSES, SERVICES AND SUPPLIERS	26
6.1 Equipment and supplies storage authorizations.....	26
SECTION-7 ENVIRONMENTAL HAZARDS.....	27
SECTION-8 HEALTH SERVICES AND PUBLIC SECURITY	28

Storage of equipment and supplies on Category II and III lands

A certificate of authorization from the KRG is required. It should be noted that no additional authorization is necessary if the equipment and materials are stored on land for which a land lease has already been granted for a temporary camp.

SECTION-7 ENVIRONMENTAL HAZARDS

Industrial activities increase the risk of upsetting the fragile balance of the environment, especially in the Nunavik region where wildlife, watershed networks and the ecosystems are highly sensitive to any disturbance. This section of the Guidebook refers to a series of documents prepared by the KEAC which provide brief instructions on residual hazardous materials management and emergency procedures in the case of environmental contamination. These three guides (available through the KEAC and the KRG) are entitled:

- ◆ ***"Residual Hazardous Materials management- Guide for Nunavik"***
- ◆ ***"Hazardous materials management guide for Nunavik."***
- ◆ ***"Spill Response and Contaminated-Site Remediation Guide for Nunavik"***

In the case of an incident where a delay to intervene could result in irreparable harm to the environment, the MDDEP should be contacted immediately to provide technical assistance. The MDDEP Environmental Emergency Service 'URGENCE-ENVIRONNEMENT' offers 24-hour service in Québec and is equipped to supply specialized equipment to respond to emergency environmental situations.

MDDEP Urgence-Environnement 24 hours services emergency number: 1-866-694-5454

Furthermore, each municipality in the Nunavik region is responsible to respond to emergencies within its territory. The emergency contact numbers in the case of hazardous product spills and environmental risks are as follows:

Environmental agents' contacts:

Residual hazardous materials coordinator in Kuujjuaq:

**Week days: Tel.: 819.964.2961, (ask for the *Environmental specialist*)
Fax: 819-964-0694**



SECTION-6 NUNAVIK BUSINESSES, SERVICES AND SUPPLIERS

The Nunavik region has a growing entrepreneurial base, and mineral exploration and mining companies operating in the region are encouraged to offer contract opportunities and make business with these enterprises. A wide spectral field of activities includes air charters, helicopter services, fuel supplies, groceries, logistical support, and heavy equipment, outfitting camp facilities, rentals and accommodation within all Nunavik communities.

The updated *Nunavik Regional and Private Business Directory* is available at the KRG, Research and Economic Development Department, or online at: www.krg.ca.



6.1 Equipment and supplies storage authorizations

Mineral exploration companies in the Nunavik region often require cargo (equipment and materials) to be transported by sealift or air to communities, and to be temporarily stored in the community(ies). Following are indications for equipment and supplies storage authorization applications:

Equipment and supplies storage within Category I land limits

Mineral exploration companies in the Nunavik region must obtain authorization from the local LHC if equipment and supplies are to be stored in a location which forms part of a land lease with a third party. An agreement will be drawn up between the mineral exploration company and the local LHC permitting use and occupation of a piece(s) of Category I land for such purposes.

Storage of equipment and supplies on a municipal lease

This authorization is usually produced in the form of a letter from the local Municipal office, in accordance with the local master plan.

SECTION 1- GLOSSARY OF TERMS

JBNQA Beneficiaries

Nunavik Inuit beneficiaries eligible under the enrolment criteria of the JBNQA Section 3 Enrolment Regime (pre-2006) and the JBNQA Complementary Agreement 18 (post-2006) enjoy all the rights and privileges provided for in the JBNQA and its complementary agreements.

Certificate of Authorization

A Certificate of Authorization must be obtained from the Ministère du Développement durable, de l'Environnement et des Parcs (MDDEP) prior to the commencement of a mining project. The Certificate of Authorization will enable project developers to perform work in accordance with the environmental laws and regulations in effect. The Certificate of Authorization will be granted after the pre-development/development project analysis has been determined to be environmentally acceptable. The Certificate of Authorization is issued after a Certificate of Conformity is granted by the KRG.

Certificate of Conformity

By virtue of section 244 of *An Act Respecting Northern Villages and the Kativik Regional Government* (R.S.Q., c. V-6.1), the Kativik Regional Government (KRG) acts as a municipality for any part of the Kativik region not legally constituted as a 'municipality'. The *Master Plan for Land Use in the Kativik Region* enables the KRG to exercise control over this territory. It establishes guidelines for land use, priorities and planning objectives. Any activities falling under municipal jurisdiction undertaken in the Kativik region have to comply with the KRG regulations. Decisions regarding land use requests and the authorization of Certificates of Conformity are made by the KRG Executive Committee based on the objectives and aims defined in the *Master Plan for Land Use in the Kativik Region*.

Development

Once the existence, the value and the extent of a feasible mineral deposit is proven, extraction rights may be obtained. Mining development activities are essentially initiated following the

execution of a mining lease. Development activities comprise the construction of the mining plant and access roads, the extraction of mineral resources and mining operations.

Harvesting Rights

Harvesting rights are defined in the JBNQA as hunting, fishing, trapping activities and the ancillary actions carried out by JBNQA beneficiaries for personal and community purposes or for commercial purposes related to the fur trade and commercial fisheries.

Impact and Benefit Agreement (IBA)

An IBA is a private and legally binding agreement that serves to document in a contractual form the benefits that a region or community can derive from the development of a local resource in connection with impacts that region or community must suffer. The specific content of an IBA varies but, typically, it includes provisions with respect to royalties and/or profit-sharing, employment, additional economic development opportunities, as well as provisions for the protection of environmental and socio-cultural amenities for those communities/areas impacted by the development of a local resource.

James Bay and Northern Quebec Agreement (JBNQA)

The JBNQA was signed in November 1975 between the Government of Quebec, the James Bay Energy Corporation, the James Bay Development Corporation, Hydro-Québec, the Grand Council of the Crees (of Quebec), the Northern Quebec Inuit Association, and the Government of Canada. It was the first major comprehensive land claims agreement in northern Canada, heralding in a new era in aboriginal land claims. In addition to settling native land claims and providing financial compensation, the agreement defined aboriginal rights and established regimes for future relations between aboriginal peoples and non aboriginals in the region and among local, regional, provincial and federal governments. Harvesting rights were provided, land categories set out and resource management regimes set up. School boards were created, health services were restructured and regional governments were established.

Kativik Environmental Advisory Committee (KEAC)

The KEAC was established pursuant to Section 23 of the JBNQA and is governed by the *Environment Quality Act*. The KEAC is a consultative body working with government(s) in matters relating to environmental and social protection in Nunavik and acts as the preferential and official forum for the Governments of Canada and Québec, the Kativik Regional Government and the Northern villages of Nunavik.

Kativik Environmental Quality Commission (KEQC)

The mandate of the KEQC is defined in Chapter 2 of the *Environment Quality Act* (R.S.Q., c. Q-2) and in Section 23 of the JBNQA. The Commission is responsible for the review of the social and environmental impacts of development projects proposed within the boundaries of the Nunavik region. It decides whether a proposed development project should be approved and, if so, under which conditions. The decisions of the Commission frequently require the promoter to forward ongoing information related to social and environmental monitoring and control.

Kativik Regional Government (KRG)

The KRG is a public organization created in 1978 pursuant to *An Act respecting Northern Villages and the Kativik Regional Government* (Kativik Act) and the JBNQA. The KRG has jurisdiction over all the public territory located north of the 55th parallel, excluding the Category IA and IB lands intended for the Cree community of Whapmagoostui.

Landholding Corporation (LHC)

The LHC in each Nunavik community holds title to selected Category I land on behalf of all Nunavik Inuit affiliated with that community. The primary responsibility of an LHC is to authorize the right to land use and occupancy within its designated Category I land. The LHC has exclusive responsibility for Nunavik Inuit harvesting rights in Category I and II lands. As such, each LHC is deemed to be the ethnic representative of Nunavik Inuit in the community.

Makivik Corporation (Makivik)

Makivik is the organization mandated to represent Nunavik Inuit beneficiaries and to protect and promote their economic, social and treaty rights and interests. Makivik also has the mandate for implementing the JBNQA (1975) and the NILCA (2008).

Mining Claim

The mining claim gives rise to the only valid exploration right in Québec. It gives the holder an exclusive right to explore mineral substances (with the exception of sand, gravel, clay and other loose deposits) in the area of the mining claim. The mining claim is of a two-year duration and can be renewed indefinitely provided the holder meets all the conditions set out in the *Mining Act* (R.S.Q., c. M-31.1), including the obligation to provide a financial investment in the exploration activities as determined by regulation.

Mining Lease

Any person who already holds a mining claim, a mineral exploration license or a mining concession limited to specific mineral substances can obtain a mining lease under certain conditions. The applicant must, however, demonstrate that the deposit is mineable. The initial term of a mining lease is 20 years, renewable thereafter every 10 years, for as long as the mining activities continue.

Ministère du Développement durable, de l'Environnement et des Parcs (MDDEP)

The MDDEP is mandated to protect the environment and natural ecosystems for the benefit of current and future generations. Its primary role is to promote sustainable development and a healthy environment within the confines of economic development and social progress. The MDDEP is responsible for the implementation of the *Environment Quality Act*.

Ministère des Ressources naturelles et de la Faune (MRNF)

The provincial MRNF undertakes to promote knowledge of and ensure the development and optimal use of land, energy, forestry and mineral resources in Québec from a sustainable development perspective, for the benefit of the population as a whole. The MRNF is responsible

Human Resources Development Plan

The Employment and Training Department of KRG should be contacted at the commencement of a mining development project in order to plan employment and training needs. The Department keeps a complete database of the local and regional construction and mining workforces.

The NMEF maintains a list of the local prospectors. Mineral exploration companies wishing to hire local prospectors should contact the NMEF office in Kuujuaq.

Nunavik Local Employment officers and training agents

Community	LEO references
Akulivik	Local Employment Officer Akulivik, Qc J0M 1V0 Tel 819-496-2437 Fax 819-496-2500
Aupaluk	Local Employment Officer Aupaluk, Qc J0M 1X0 Tel 819-491-7353 Fax 819-491-7498
Inukjuak	Local Employment Officer Inukjuak, Qc J0M 1M0 Tel 819-254-8760 Fax 819-254-8763
Ivujivik	Local Employment Officer Ivujivik, Qc, J0M 1H0 Tel 819-922-3328 Fax 819-922-3333
Kangiqsualujuaq	Local Employment Officer Kangiqsualujuaq, Qc J0M 1N0 Tel 819-337-5204 Fax 819-337-5308
Kangiqsujuaq	Local Employment Officer Kangiqsujuaq, Qc J0M 1K0 Tel 819-338-3327 Fax 819-338-3339
Kangirsuk	Local Employment Officer Kangirsuk, Qc J0M 1A0 Tel 819-935-4406 Fax 819-935-4436

Community	NVs references
Kuujuaq	Local Employment Officer Kuujuaq, Qc J0M 1C0 Tel 819-964-2620 Fax 819-964-2934
Kuujuaaraapik	Local Employment Officer Kuujuaaraapik, Qc J0M 1G0 Tel 819-929-3552 Fax 819-929-3576
Puvirnituq	Local Employment Officer Puvirnituq, Qc, J0M 1P0 Tel 819-988-2733 Fax 819-988-2227
Quaqtaq	Local Employment Officer Quaqtaq, Qc J0M 1J0 Tel 819-492-9183 Fax 819-492-9197
Salluit	Local Employment Officer Salluit, Qc J0M 1S0 Tel 819-255-8535 Fax 819-255-8059
Tasiujaq	Local Employment Officer Tasiujaq, Qc J0M 1T0 Tel 819-633-5249 Fax 819-633-5672
Umiujaq	Local Employment Officer Umiujaq, Qc J0M 1Y0 Tel 819-331-7346 Fax 819-331-7400



SECTION 5 – REGIONAL EMPLOYMENT

This Guidebook wishes to promote the possibility of careers in the mineral exploration and mining development sectors for Nunavik residents. Therefore, the mineral exploration companies are encouraged to employ local human resources. Prospectors, trained by the NMEF, are available in each community and the KRG Employment and Training Department are available to assist companies eager to involve the local workforce. Every Nunavik community has a Local Employment Officer (LEO) who is prepared to support the industry in terms of labor resources. In addition, the Nunavik region offers a multitude of guides, camp managers, carpenters, mechanics and cooks.

Recruitment assistance

Please contact the KRG Local Employment Offices for any information regarding employment services or employment and training programs. There are two head offices in the Nunavik region, one in Inukjuak (serving the Hudson Coast) and one in Kuujuaq (serving the Ungava Coast):

Hudson Bay LEO Head office
 Mary Weetaluktuk
 Inukjuak, Quebec
 (819) 254-8760
mweetaluktuk@krq.ca

Ungava Bay LEO Head office
 Alain Thurber
 Kuujuaq, Quebec
 (819) 964-2961
athurber@krq.ca

Job postings

For any employment postings or related information, you may contact:

Sarah Gordon, Local Employment officer
 Employment and Training Department
 Kativik Regional Government
 P.O. Box 9, Kuujuaq (Qc) J0M 1C0
 Tel.: 819.964.2961
 Fax: 819.964.2934
sgordon@krq.ca

for the implementation of the *Mining Act* and the *Mining Duties Act* (R.S.Q., c. D-15).

Northern Village (NV)

Under the *Kativik Act*, the fourteen (14) municipalities of Nunavik are responsible for delivering essential public services in the region's villages.

Nunavik Mineral Exploration Fund (NMEF)

In accordance with its mandate, the NMEF fosters the development of mineral resources in the Nunavik region by developing and supporting mineral exploration and awareness activities while simultaneously encouraging the involvement of the Inuit communities in these activities. Since its inception in 1998 and through a funding agreement with the MRNF, this non-profit organization provides training to Nunavik Inuit on the exploration of mineral deposits, carries out exploration projects and assists the mineral exploration industry in the realization of different projects.

Post-development

Mining operations will cease after mineral resources are depleted or the mining extraction or mining development is determined to be no longer profitable (closure stage). In the event that such mining operations cease, the mining site must be converted, in as much as possible, to its original state (reclamation stage).

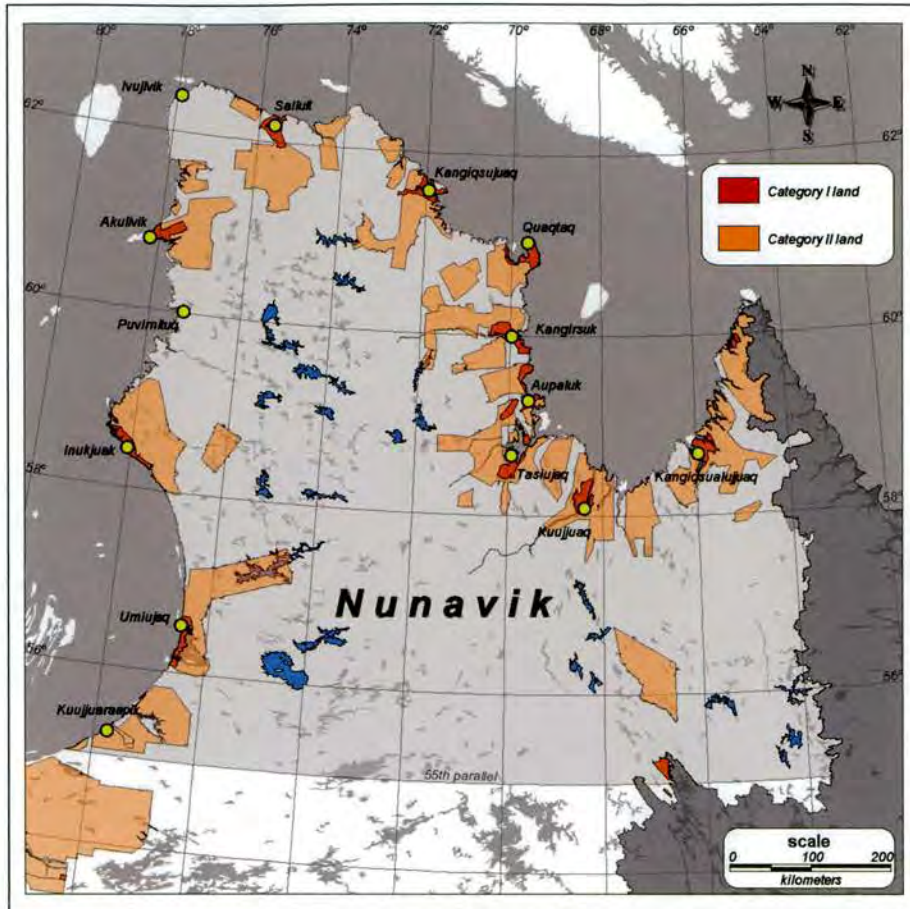
Pre-development

Pre-development defines early and advanced exploration activities that involve geoscientific surveys (ground and airborne), mapping, mineral exploration fieldwork (including core sampling and drilling) over potential areas and designated mining titles (claims). These activities are undertaken in an effort to discover and evaluate the extent of mineral deposits and thereafter determine the preliminary economic potential of same.

Partnership Agreement on Economic and Community Development in Nunavik (Sanarrutik Agreement)

The purpose of the Sanarrutik Agreement entered into in 2006 between Makivik, the KRG and the Government of Québec is to establish a "partnership" with a common vision of the economic and community development of Nunavik. The agreement aims to accelerate the development of the hydroelectric, mining and tourism potential of Nunavik; to share the benefits of the economic development of Nunavik; to favor economic spin-offs for Nunavik Inuit; to favor a greater autonomy for Makivik and KRG and to provide these organizations with more responsibility for the economic and community development of Nunavik Inuit; and, finally, to enhance public services and infrastructure development in Nunavik.

SECTION 2- NUNAVIK MAP



Nunavik Municipalities

Community	NVs references
Akulivik	NV of Akulivik P.O. Box 50 Akulivik (Qc) J0M 1V0 Tel.: 819.496.2222 Fax: 819.496.2200
Aupaluk	NV of Aupaluk P.O. Box 6 Aupaluk (Qc) J0M 1X0 Tel.: 819.491.7070 Fax: 819.491.7035
Inukjuak	NV of Inukjuak P.O. Box 234 Inukjuak (Qc) J0M 1M0 Tel.: 819.254.8845 Fax: 819.254.8779
Ivujivik	NV of Ivujivik P.O. Box 20 Ivujivik (Qc) J0M 1H0 Tel.: 819.922-9940 Fax: 819.922-3045
Kangiqsualujuaq	NV of Kangiqsualujuaq P.O. Box 120 Kangiqsualujuaq (Qc) J0M 1N0 Tel.: 819.337.5271 Fax: 819.337.5200
Kangiqsujuaq	NV of Kangiqsujuaq P.O. Box 60 Kangiqsujuaq (Qc) J0M 1K0 Tel.: 819.338.3342 Fax.: 819.338.3237
Kangirsuk	NV of Kangirsuk P.O. Box 90 Kangirsuk (Qc) J0M 1A0 Tel.: 819.935.4388 Fax: 819.935.4287

Community	NVs references
Kuujuaq	NV of Kuujuaq P.O. Box 210 Kuujuaq J0M 1C0 Tel.: 819.964.2943 Fax: 819.964.0734
Kuujuaaraapik	NV of Kuujuaaraapik P.O. Box 360 Kuujuaaraapik (Qc) J0M 1G0 Tel.: 819.929.3360 Fax: 819.929-3453
Puvirnituk	NV of Puvirnituk P.O. Box 150 Puvirnituk (Qc) J0M 1P0 Tel.: 819.988.2825 Fax: 819.988.2751
Quaqtaq	NV of Quaqtaq P.O. Box 107 Quaqtaq (Qc) J0M 1J0 Tel.: 819.492.9985 Fax: 819.492.9935
Salluit	NV of Salluit P.O. Box 240 Salluit (Qc) J0M 1S0 Tel.: 819.255.8953 Fax: 819.255.8802
Tasiujaq	NV of Tasiujaq P.O. Box 54 Tasiujaq (Qc) J0M 1T0 Tel.: 819.633.9924 Fax: 819.633.5026
Umiujaq	NV of Umiujaq P.O. Box 108 Umiujaq (Qc) J0M 1Y0 Tel.: 819.331.7000 Fax: 819.331-7057

Local Landholding Corporations

Community	LHCs references
Akulivik	Qekeirriq LHC P.O. Box 59 Akulivik (Qc) J0M 1V0 Tel.: 819.496.2640 Fax: 819.496.2629
Aupaluk	Nunavik LHC P.O. Box 29 Aupaluk (Qc) J0M 1X0 Tel.: 819.491.7045 Fax: 819.491.7045
Chisasibi	Kigaluk LHC P.O. Box 760 Chisasibi (Qc) J0M 1E0 Tel.: 819.855.1881 Fax: 819.855.1891
Inukjuak	Pituvik LHC P.O. Box 285 Inukjuak (Qc) J0M 1M0 Tel.: 819.254.8101 Fax: 819.254.8252
Ivujivik	Nuvummi LHC P.O. Box 16 Ivujivik (Qc) J0M 1H0 Tel.: 819.922-9944 Fax: 819.922-3045
Kangiqtualujuaq	Qiniqtiq LHC P.O. Box 160 Kangiqtualujuaq (Qc) J0M 1N0 Tel.: 819.337.5449 Fax: 819.337.5752
Kangiqtujuaq	Nunaturlik LHC P.O. Box 39 Kangiqtujuaq (Qc) J0M 1K0 Tel.: 819.338.3368 Fax.: 819.338.1071

Community	LHCs references
Kangirsuk	Saputik LHC P.O. Box 119 Kangirsuk (Qc) J0M 1A0 Tel.: 819.935.4269 Fax: 819.935.4440
Killiniq	Epigituk LHC P.O. Box 197 Kangiqtualujuaq (Qc) J0M 1N0 Tel.: 819.337.5576 Fax: 819.337.5325
Kuujuuaq	Nayumivik LHC P.O. Box 209 Kuujuuaq J0M 1C0 Tel.: 819.964.2870 Fax: 819.964.2280
Kuujuaraapik	Sakkuq LHC P.O. Box 270 Kuujuaraapik (Qc) J0M 1G0 Tel.: 819.929.3348 Fax: 819.929-3275
Quaqtaq	Tuvaaluk LHC P.O. Box 102 Quaqtaq (Qc) J0M 1J0 Tel.: 819.492.9281 Fax: 819.492.9302
Tasiujaq	Arqivik LHC P.O. Box 52 Tasiujaq (Qc) J0M 1T0 Tel.: 819.633.5335 Fax: 819.633.5337
Salluit	Qaqqalik LHC P.O. Box 30 Salluit (Qc) J0M 1S0 Tel.: 819.255.8908 Fax: 819.255.8864
Umiujaq	Annituvik LHC P.O. Box 34 Umiujaq (Qc) J0M 1Y0 Tel.: 819.331.7831 Fax: 819.331-7832

SECTION 3 – CONTEXTS

3.1 - Inuit Category I, II and III lands

Nunavik Inuit, at the time of the execution of the JBNQA, selected categories of land in Nunavik to which were attached different titles, rights, privileges and obligations, and in the matter of land use:

Nunavik land regime

	Category I	Category II	Category III
Ownership	Community owned (LHC)	Quebec	Quebec
	Surface only (LHC)	Surface (Qc)	Surface (Qc)
	Sub-surface (Qc) Except Soapstone	Sub-surface (Qc) Permit at no cost for acquisition of soapstone by beneficiaries	Sub-surface (Qc)
Harvesting	Exclusive rights on Harvesting	Exclusive rights on Harvesting	No exclusivity
	Exclusive Trapping Right	Exclusive Trapping Right	Exclusive Trapping Right
Land Use	Rights of use of Category I lands: no mineral obtained or extracted without LHC's consent and compensation payment	Development possible, with compensation or land replacement	Development possible
	LHC authorizes Use and Occupation per applicable terms and regimes (Construction, Development, Residential, etc)	Qc authorizes Use and Occupation	Qc authorizes Use and Occupation

3.2 – Mining and Inuit engagement

The Nunavik region and its institutions are interested in actively participating in mining development as the mining sector represents a strategic and significant impact on the development of a sustainable and regional economy.

As such, effective community engagement will ensure the growth of future mineral exploration and mining activity in Nunavik. Moreover, considering the current challenges of the Nunavik region in terms of demography, labor, access and infrastructure, mineral exploration and mining activities will directly affect the Nunavik region and these challenges should be dealt with in a concerted effort. The concerned parties

should address the impacts of any mining development on the Nunavik region or its inhabitants at the onset of the project.

It is the intent of this Guidebook to promote mutually satisfying relationships that would generate valuable and efficient consultation and engagement between the companies and developers, and their regional and local partners.

3.2.1 Communication Networking, and Sustainable relationship between the Nunavik region and the mining sector

The mining stakeholders must facilitate access of information to concerned communities and organizations, ensuring reasonable and predictable timetables, and easily understandable information, before, during and after the mining development. The table below sets forth the basic queries and considerations of stakeholders regarding mining development:

<i>Mining development stages</i>	<i>Community Interests</i>	<i>Company Interests</i>
<p>Early Exploration (Pre-development)</p>	<ul style="list-style-type: none"> - Can we trust you? Will you respect our concerns and our knowledge? - What are you doing out there in our back yard? - What have you found and what are your plans? - What steps do you take to ensure protection of wildlife and habitat? - What steps do you take to respect our priorities of harvesting? - Who did you contact on a regional or local level to ensure all requirements are filled? - Are there opportunities for us at this stage? 	<ul style="list-style-type: none"> - Let's build a relationship of trust, respect and understanding. - Are there areas of sensitivity or concern we should know about? - What local goods and services can we use? - How can we do our work in a way that is cost-effective and acceptable?
<p>Advanced Exploration to Project Definition and Permitting (Pre-development)</p>	<ul style="list-style-type: none"> - What benefits can we gain from this activity? - How can we prepare for the jobs and business opportunities that will arise should the project lead to a mine? - How can we participate effectively in the regulatory process? 	
<p>Mine Construction and Operation (Development)</p>	<ul style="list-style-type: none"> - have promises or commitments perceived to have been made during the early days of project development been met? 	
<p>Closure and Reclamation (Post-development)</p>		

4.3 - Contact information

Nunavik regional organizations (Authorization/consultation)

Kativik Environmental Advisory Committee
KEAC Secretariat
P.O. Box 930
Kuujjuaq (Qc) J0M 1C0
Tel.: 819.964.2961, extension 2287
Fax: 819-964-0694
E-mail: keac-ccek@krg.ca

Kativik Environmental Quality Commission
P.O. Box 930
Kuujjuaq, QC J0M 1C0
Tel.: 819.964.2961 ext. 2322
Fax: 819.964.2611
Email: secretariat@keqc-cqek.ca

Kativik Regional Government
(Certificate of Conformity)
P.O. Box 9
Kuujjuaq, (Qc) J0M 1C0
Tel.: 819.964.2961
www.krg.ca

Makivik Corporation
(IBA Resolution)
P.O. Box 179
Kuujjuaq, (Qc) J0M 1C0
Tel.: 819.964.2925
1.877.625.4845
E-mail: info@makivik.org
www.makivik.org

Ministère du Développement Durable et des Parcs
(Certificate of Authorization)
Centre d'information
Edifice Marie-Guyart, 29e étage
675, boulevard René-Lévesque Est
Québec (Qc) G1R 5V7
Tel.: 418.521.3830 or 1.800.561.1616
Fax: 418.646.5974
E-mail : info@mddep.gouv.qc.ca

Ministère des Ressources naturelles et de la Faune du Québec
(Claims designation)
Customer Services
880, chemin Sainte-Foy, RC 120-C
Québec (Qc) G1S 4X4
Tel. : 418.627.8600
1.866.248.6936
Fax: 418.644.6513
E-mail: services.clientele@mrnf.gouv.qc.ca
www.mrn.gouv.qc.ca

Ministère des Ressources naturelles et de la Faune du Québec
Direction des affaires régionale du Nord-du-Québec
1121, Boul. Industriel
Label-sur-Quévillon (Qc) J0Y 1X0
Tel. : 819.755.4838
Fax : 819.755.3541

Nunavik Landholding Corporation Association
P.O. Box 179
Kuujjuaq (Qc) J0M 1C0
Tel.: 819.964.0364
Fax: 819.964.0331
www.nlhca.com

Nunavik Mineral Exploration Fund
P.O. Box 909
Kuujjuaq (Qc) J0M 1C0
Tel.: 819.964.1316
E-mail: nmef.kuujjuaq@gmail.com

Sport hunting

In all instances, individuals who are not beneficiaries of the JBNQA and who want to conduct sport-hunting activities within the Nunavik region must obtain valid Québec Government permits. These people, in addition to provincial licenses which are mandatory in Québec and the requirement to carry on the sport-hunt activities under the auspices of an outfitter, must obtain authorization permits from the concerned local LHCs in order to sport-hunt on Category I and II lands. The requisite fees, quotas and conditions of the local LHCs may be more restrictive than the provincial regulations but must be respected at all times.

Trapping

Individuals who are not beneficiaries of the JBNQA are not eligible to conduct trapping activities in the Nunavik region. This is an exclusive right of JBNQA beneficiaries.



4.2.2 Continuous obligations

With the growth of mineral exploration development in the Nunavik region, it is extremely important to keep the channels of communication open not only with regional organizations (Makivik, the KRG) but also with the concerned Inuit community(ies). Consultations, project updates, pertinent information sharing through different media (local radio, public meetings, focused workshop sessions, site visits etc.) are strongly recommended in order to keep communities fully informed of all project development.

Insofar as possible, mineral exploration companies shall give preference to the concerned Inuit community(ies) regarding the engagement of personnel to carry out mining activities. Regional and local human resource centers may be contacted (for example, the NMEF and the local employment offices).

Mineral exploration companies shall give all due consideration to the concerns expressed by regional or local organizations.

Finally, mineral exploration companies shall at all times protect the environment, respect the fragility of the northern milieu and perform remedial measures at sites affected by mineral exploration activities.

3.2.3 Case studies and best practises

As mentioned above, there has been a considerable amount of mining activity in the Nunavik region over the years, some of which has resulted in successful partnership agreements between the mining companies and the Nunavik region.

The Raglan 1995 Agreement

In February 1995, Makivik Corporation, the Qarqalik Landholding Corporation of Salluit, the Northern Village Corporation of Salluit, the Nunaturlik Landholding Corporation of Kangiqsujuaq, the Northern Village Corporation of Kangiqsujuaq and the Société Minière Raglan du Québec Ltée entered into the "Raglan (1995) Agreement". This agreement endeavored to facilitate the development of the Raglan Mine with environmental diligence and enhanced participation for Nunavik Inuit in terms of training and preferential employment. It also created direct social and economic benefits for Nunavik Inuit through the distribution of guaranteed payments and revenue-sharing allocations into a trust fund created for this purpose. Since 1998, the Raglan Mine has produced approximately 1.1 million tons of nickel-copper ore annually from three underground mines and two open-pit operations. The Raglan Mine now employs approximately 700 people, 20% of which are Nunavik Inuit.

The Nunavik Nickel Agreement

In April 2008, Makivik Corporation, the Nunaturlik Landholding Corporation of Kangiqsujuaq, the Qarqalik Landholding Corporation of Salluit, the Northern Village Corporation of Puvimtuq and Canadian Royalties Inc. entered into the "Nunavik Nickel Agreement". This agreement constitutes a formal commitment by Canadian Royalties to ensure some local and regional sharing of the economic benefits arising from the project. Furthermore, in addition to providing for Inuit participation by local hiring, training programs and contracting preference, this agreement includes guaranteed payments and revenue-sharing allocations to Makivik and the communities over the expected life of the mining project. It is anticipated that this agreement will deliver economic and social benefits to Nunavik Inuit, help in the mitigation of the project's impacts, and provide an efficient and ongoing relationship between the parties during both the developmental and operational phases of the project.

SECTION 4 - PROVISIONS ON MINING ACTIVITIES

Mining activities conducted for exploration or developmental purposes in the Nunavik region create other issues than those contained in the *Mining Act* or the *Quality Environmental Act*.

The JBNQA and its related Acts² form a framework which serves to guide the mining operations, the whole notwithstanding the obligations of the Government of Quebec under the Sanarrutik Agreement to permit, in the context of mining development, the execution of IBAs with Makivik, inclusive of remedial measures and monitoring, financial arrangements, or provisions on employment and contracts.

This Guidebook summarizes such a framework as follows (presuming that mining companies have obtained the necessary mining claims from the MRNF)³:

² *An Act respecting the Land Regime in the James Bay and New Québec Territories* (R.S.Q., c R-13.1), *An Act respecting Hunting and Fishing Rights in the James Bay and New Québec Territories* (R.S.Q., c D-13.1),.

³ To the exception of mining claims designated in Category I lands, were a prior step is required while obtaining an authorization from the local LHC, which is to be detailed there below;

4.1 Exploration/Exploitation/Termination Framework

Generally, the mining cycle is divided into three main phases as presented in the table below:

Mining development stages

<ul style="list-style-type: none">• A. Pre-Development	Prospecting/early exploration, including drilling campaigns; Advanced exploration to project definition and permitting;
<ul style="list-style-type: none">• B. Development	Mine construction and operation;
<ul style="list-style-type: none">• C. Post-Development	Closure and reclamation.

4.1.1 Pre-Development

4.1.1.1 Category I land

- **Authorization to explore on Category I lands**

Following are the authorizations required prior to the undertaking of any exploration activity:

- a) Application to the concerned LHC with the following divulgations:
 - The nature and scope of the project;
 - The starting date and duration of activities;
 - The location of the activities and, if planned, of roads to be built;
 - The description and site installations;
 - The means of transportation to be used for material and human resources;
 - The site location for material storage;
 - The approximate number of workers;
 - The location of waste (water, solid) disposal;
 - The requirements of the project site with respect to food supplies;
 - The requirements of the project with respect to local human resources;
 - The projected transits in and around Nunavik communities.
- b) Resolution produced by the local LHC when the permit request is authorized;
 - + Entering into a Memorandum of Understanding (MOU) with the local LHC authorizing the Use and Occupation of Category I lands for exploration purposes;
 - + Payment of use or rights over Category I lands (extraction of natural material) to local LHC;
- c) Mining claims designation from MRNF;

4.1.3 Post-Development

The mineral extraction and processing at mining development sites produces a substantial quantity of mine tailings that can affect the immediate environment if necessary precautions are not taken. The *Québec Mining Act* and its regulations include provisions that require mining companies to rehabilitate the areas affected by their projects as a result of extraction and exploration activities that require a significant amount of disturbance of the site surface and mine tailings sites. Legally, companies are required to file a site rehabilitation plan and provide financial guarantees.

A company that anticipates using or that is already using a storage area must provide the MRNF with a financial guarantee once its rehabilitation plan has been approved. The guarantee must cover 70% of the estimated cost of rehabilitating the storage site. The number of annual payments depends on the type of activity (exploration or extraction) and the expected duration of the activity (maximum of 15 years).

Since 1995, the regulatory provisions of the *Mining Act* require mining companies to submit and have approved a rehabilitation plan for mining sites in operation, inclusive of roads and infrastructures. To facilitate the drafting of rehabilitation plans, the MRNF, with the collaboration of the MDDEP, produced a *Rehabilitation Guide* which outlines the guidelines and specifies the requirements to be complied with when rehabilitating sites, the plan contents, and the steps leading to the approval.

The *Rehabilitation Guide* is a tool designed to help mining companies draw up a rehabilitation plan. It deals, in particular, with the main features of the plan such as its structure and technical content and general rehabilitation requirements. The guide is available on the MRNF website at:

<http://www.mrm.gouv.qc.ca/english/mines/rehabilitation/rehabilitation-guide.jsp>

4.2 Other Provisions and Obligations

4.2.1 Respecting Fishing, Hunting and Trapping rights

Effective channels of communication are of great importance in preventing any conflicts between the harvesting rights and related activities of Nunavik Inuit and the mineral exploration projects. Mitigating measures with respect to exclusive harvesting rights on Category I and II lands include a duty to inform the concerned LHCs and impacted communities of planned activities (both ground and airborne).

Sport fishing

In all instances, individuals who are not beneficiaries of the JBNQA and who want to conduct sport-fishing activities in the Nunavik region must obtain valid Québec Government permits. These individuals, in addition to obtaining a Québec fishing license which is mandatory, must obtain an authorization permit from the concerned local LHCs in order to sport-fish on Category I and II lands. The requisite fees, quotas and conditions of the local LHCs may be more restrictive than the provincial regulations but must be respected at all times.

4.1.2.2 Category II lands

- Resolutions produced by Makivik, the LHC and the NV;
- Entering into of an IBA with Makivik;
- Replacement land or agreed upon compensation to local LHC;
- Completion of an Environmental and Social Impact Assessment (Section 23 JBNQA) and Feasibility Study;
- Issuance of a Certificate of Authorization from the MDDEP deputy minister;
- Project analysis, evaluation and public hearings set forth by the KEQC;
- Recommendations to the MDDEP;
- Issuance of a Certificate of Authorization from the MDDEP;
- Issuance of a Mining Lease from the MRNF Office of the Registrar.

*(Mining development should make use of existing regional infrastructures such as roads, wharves and airports).

4.1.2.3 Category III lands

- Resolutions produced by Makivik, the LHC and the NV;
- Entering into of an IBA with Makivik;
- Completion of an Environmental and Social Impact Assessment (Section 23 JBNQA) and Feasibility Study;
- Issuance of a Certificate of Authorization from the MDDEP;
- Project analysis, evaluation and Public hearings set forth by the KEQC;
- Recommendations to the MDDEP;
- Issuance of a Certificate of Authorization from the MDDEP;
- Issuance of a Mining Lease from the MRNF Office of the Registrar.
-



*(Mining development should make use of existing regional infrastructures such as roads, wharves and airports)

- d) Project information transmission to Makivik.

◆ Establishment of Temporary/Permanent/Camp/Structures

- a) Application to LHC for a permit ;
- b) Authorization from LHC via Construction MOU, and/or MOU for the use and occupation of Category I lands, plus rentals (temporary) or land leases (long-term);
- c) *Within municipal limits*: NV authorization required;
- d) Application for Certificate of Conformity from KRG;
- e) Application for Certificate of Authorization from MDDEP (certificate conditional upon having previously obtained the Certificate of Conformity from KRG).

◆ Establishment of Trails/Roads

*(Mining development should make use of existing regional infrastructures such as roads, wharves and airports).

- a) Application to LHC for a permit to be followed by the issuance of an Authorization and signature of a Construction MOU and/or Land Lease;
- b) *Within municipal limits*: NV authorization required;
- c) Application for a Certificate of Conformity from KRG;
- d) Application for a Certificate of Authorization from MDDEP (certificate conditional upon having previously obtained the Certificate of Conformity from KRG).

NOTE: Community of Puvimittuq status

Every Nunavik Inuit community has an LHC with the notable exception of Puvimittuq. This community did not select its Category I and II lands following the execution of the JBNQA and consequently has no LHC in its community. The mining companies must contact the interested NV and the MRNF for mineral exploration activities in this vicinity.

4.1.1.2 Category II land

Authorization to explore on Category II lands

Following are the authorizations required prior to the commencement of exploration activities:

- a) Mining claims designation from MRNF;
- b) Transmission of the following information to the concerned LHC(s) – NV(s) with the following details:
 - The nature and scope of the project;
 - The starting date and duration of activities;
 - The location of the activities and, if planned, of roads to be built;
 - The description and site installations;
 - The means of transportation to be used for material and human resources;
 - The site location for material storage;
 - The approximate number of workers;
 - The location of waste (water, solid) disposal;
 - The requirements of the project site with respect to food supplies;
 - The requirements of the project with respect to local human resources;
 - The projected transits in and around Nunavik communities.

c) Transmission of information regarding the Project to Makivik.

◆ **Establishment of Temporary/Permanent/Camp/Structures**

- a) Application for Certificate of Conformity from KRG (input from LHC);
- b) Application for Certificate of Authorization from MDDEP (certificate conditional upon having previously obtained the Certificate of Conformity from KRG);
- c) Land lease required from MRNF (Land Division).

◆ **Establishment of Trails/Roads**

*(Mining development should make use of existing regional infrastructures such as roads, wharves and airports).

- a) Application for Certificate of Conformity from KRG;
- b) Application for Certificate of Authorization from MDDEP (certificate conditional upon having previously obtained the Certificate of Conformity from KRG);
- c) Land lease required from MRNF (Land Division).

4.1.1.3 Category III land

Authorization to explore on Category III lands

Following are the authorizations required prior to any exploration activity:

- a) Mining claims designation from MRNF;
- b) Information transmission to concerned LHC(s) and nearby NVs with following details:
 - The nature and scope of the project;
 - The starting date and duration of activities;
 - The location of the activities and, if planned, of roads to be built;
 - The description and site installations;
 - The means of transportation to be used for material and human resources;
 - The site location for material storage;
 - The approximate number of workers;
 - The location of waste (water, solid) disposal;
 - The needs of the project site in matters of food supplies;
 - The need of the project in matters of local human resources;
 - The projected transits in and around Nunavik communities.

c) Project information transmission to Makivik.

◆ **Establishment of Temporary Camp/Structures**

- a) Application for Certificate of Conformity from KRG (input from LHC);
- b) Application for Certificate of Authorization from MDDEP;
- c) Land lease required from MRNF (Land Division)

◆ **Establishment of Trails/Roads**

*(Mining development should make use of existing regional infrastructures such as roads, wharves and airports)

- a) Application for Certificate of Conformity from KRG;
- b) Application for Certificate of Authorization from MDDEP (certificate conditional upon having previously obtained the Certificate of Conformity from KRG);
- c) Land lease required from MRNF (Land Division).

4.1.2 Development

This section does not intend nor expect to describe at length the whole authorization process for mining development in the Nunavik region. However, the following is a summary of the requisite requirements and authorizations prior to undertaking any mining development activity in the Nunavik region:

4.1.2.1 Category I land

- The mining project development may only proceed with the acceptance of the concerned landowner (LHC) and the execution of an agreement with the LHC;
- Entering into of an IBA with Makivik;
- Agreement, or replacement of land, or agreed upon compensation to the local LHC;
- Completion of an Environmental and Social Impact Assessment (Section 23 JBNQA), and Feasibility Study;
- Issuance of a Certificate of Authorization from the MDDEP;
- Project analysis, evaluation and public hearings set forth by the KEQC;
- Recommendations to the MDDEP;
- Issuance of a Mining Lease from the MRNF Office of the Registrar;

Section 23 of the JBNQA deals with the environmental and social impact assessment and review procedures of all mining activities, as well as mining and mineral exploration roads. It should be noted that the impact review committees may distinguish between the preliminary, intermediate and advanced mineral exploration level according to the perceived degree of environment and social impact of the project in question.

*(Mining development should make use of existing regional infrastructures such as roads, wharves and airports)